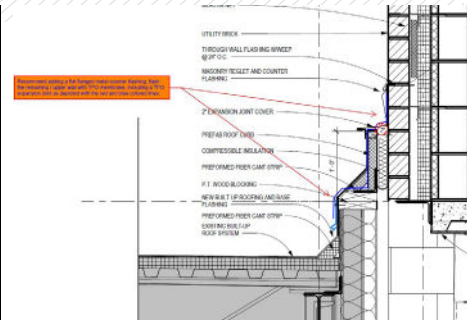
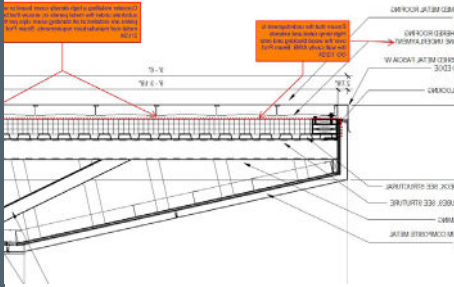


THIRD PARTY CONSULTING

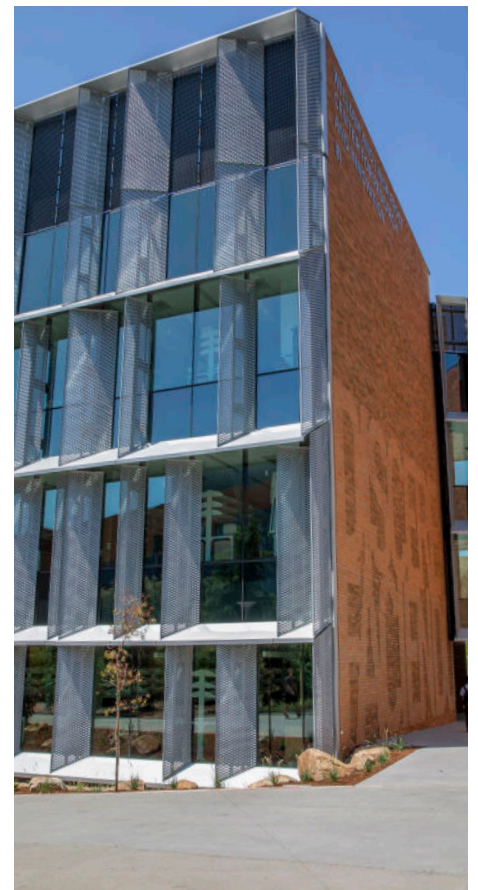


Third party building envelope consultants provide keen insights to empower owners with resilient buildings with a long life-cycle. They stand as impartial sentinels meticulously inspecting and evaluating every facet of the overall design and construction of the project at the owner's behalf.

UNLEASHING THE POWER OF THIRD-PARTY BRILLIANCE FOR BUILDING ENVELOPE EXCELLENCE

As third-party building envelope consultants, we assess, analyze and provide advice on the building's exterior components condition and performance. Our professionals play a crucial role in offering independent, unbiased insights into the structural integrity, energy efficiency, and overall health of the building envelope. Here's a description of our roles and responsibilities:

- 1. Objective Evaluation:** Conduct thorough and impartial assessments of the building envelope, including the roof, walls, windows, doors, and other exterior elements. Provide an unbiased evaluation of the current condition, identifying existing issues and potential risks.
- 2. Inspections and Testing:** Perform detailed inspections using specialized equipment and testing methods to assess the integrity of materials, insulation, and waterproofing systems. Conduct diagnostic tests to identify air and water infiltration points.
- 3. Analysis of Building Performance:** Analyze the overall performance of the building envelope in terms of energy efficiency, thermal insulation, and resistance to environmental elements. Evaluate the effectiveness of existing components in meeting industry standards and codes.
- 4. Reporting and Documentation:** Prepare comprehensive reports detailing findings, recommendations, and a prioritized action plan for addressing identified issues. Provide documentation that can be used for decision-making, budgeting, and future planning.
- 5. Risk Assessment:** Assess potential risks associated with the building envelope, including vulnerabilities to weather conditions, structural deterioration, and potential water damage. Offer recommendations to mitigate identified risks.



Hannah Moon
e. hannah.moon@beamprof.com
t. 510-916-1574



CONTACT