



# PREPAREDNESS & RECOVERY

SUPPORTING COMMUNITIES IN THE AFTERMATH OF NATURAL DISASTERS

---



**P**BK's commitment to the school districts we serve goes beyond just providing architectural services; it extends to a genuine dedication to the safety, well-being, and success of these educational communities, especially in the immediate moments following extreme weather-related incidents.

Responding to natural disasters is a multifaceted and coordinated effort that involves various stakeholders, including government agencies, emergency responders, non-profit organizations, and the affected community itself. PBK is able to assist school districts every step of the way:

**Rapid Response:**

PBK mobilizes quickly on behalf of the school district to be on-site offering needed supplies, support and help for the community in the wake of extreme weather.

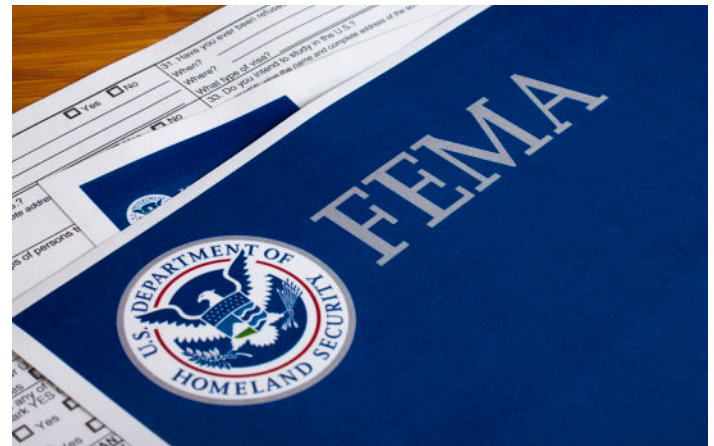


**Comprehensive Assessments:**

PBK conducts thorough and meticulous assessments of educational facilities affected by extreme weather events. These assessments encompass structural integrity, safety, environmental considerations, accessibility, and functionality. Their goal is to provide school districts with a comprehensive understanding of the damage incurred.

**FEMA Collaboration:**

PBK maintains a close and strategic partnership with FEMA's Office of Response and Recovery. This partnership ensures that the firm is well-versed in FEMA's guidelines and procedures for conducting post-disaster facilities assessments.

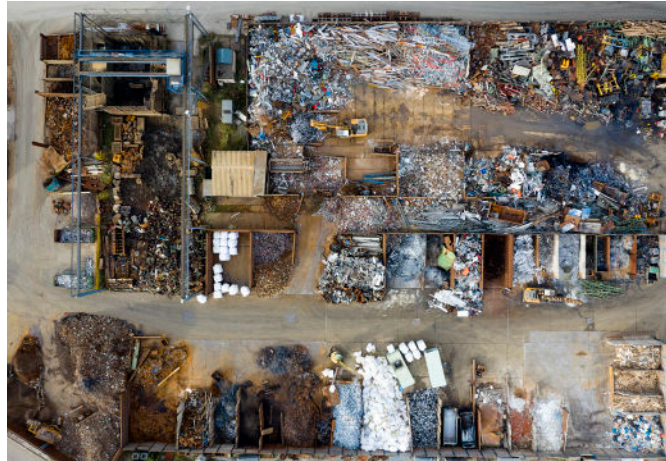


**Grant Application Expertise:**

The firm assists school districts in navigating the complexities of FEMA grant applications, ensuring that they secure the necessary funding for resilience and recovery projects. PBK supports districts in preparing documentation and advocating for their needs effectively.

### **Customized Resilience Solutions:**

PBK collaborates closely with school districts to develop tailored resilience solutions based on the assessment findings. These solutions prioritize the repair, reconstruction, or retrofitting of facilities to ensure rapid restoration and a safe learning environment for students and staff.



### **Sustainable and Resilient Design:**

PBK places a strong emphasis on sustainable and resilient design principles. They incorporate cutting-edge technologies and materials to not only address immediate recovery needs but also enhance long-term resilience against future disasters.

### **Community Engagement:**

Recognizing the importance of community involvement, PBK facilitates community workshops and engagement sessions. This ensures that recovery efforts align with the values and priorities of the local community and school district stakeholders.



### **Training and Capacity Building:**

PBK provides training to school district personnel in emergency response, disaster preparedness, and facilities management. This empowers educational institutions to handle future crises more effectively.

### **Ongoing Support:**

PBK maintains an enduring relationship with school districts, offering support throughout the recovery process. They continuously monitor the performance and effectiveness of resilience measures, making necessary adjustments to ensure long-term success.

### **Innovation and Research:**

PBK is dedicated to staying at the forefront of educational resilience and disaster recovery. They engage in ongoing research and innovation to develop cutting-edge solutions applicable to future projects.

Our approach is reflected in a rapid response, prioritization of safety, ongoing support, and holistic engagement with school districts and their communities. We understand the importance of not just rebuilding facilities but also nurturing the spirit and resilience of the educational communities we serve.



For more information, contact:



[roy.montalbano@pbk.com](mailto:roy.montalbano@pbk.com)



[shawn.lecrone@beamprofessionals.com](mailto:shawn.lecrone@beamprofessionals.com)

[PBK.COM](http://PBK.COM)